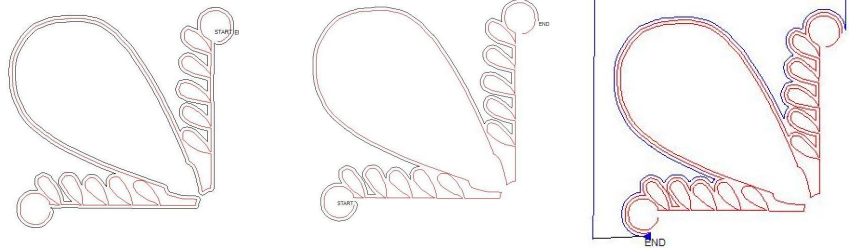


Filling Large Background Spaces

Anita Shackelford 2017

The best way to stitch a Fill pattern into a large background space is to work in sections. On this quilt, I placed and stitched one quarter of the background pattern at a time. This amount fit within my throat space, and stitching smaller sections caused less shrinkage than working across the entire top half at one time.



SID and Echo

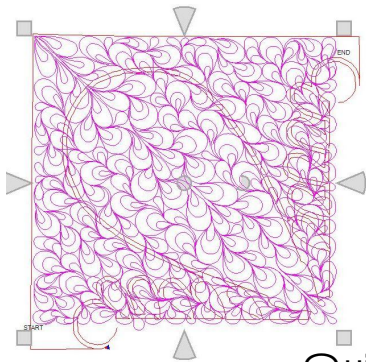
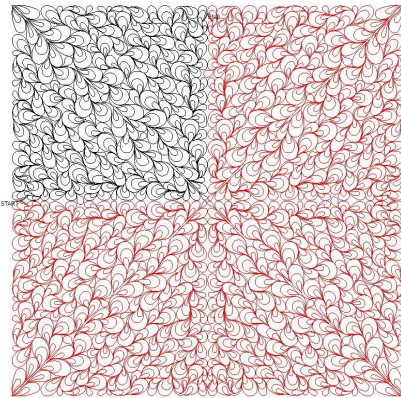
Photo 1, above, shows SID around the applique, plus 1 echo. Note that echo will go around all sides of an "open" SID line. Use Nodes / Divide to remove the part of the line that is not needed. (photo 2)

A second echo is sometimes helpful to eliminate the deeper nooks and crannies where you might not want the Fill pattern to go.

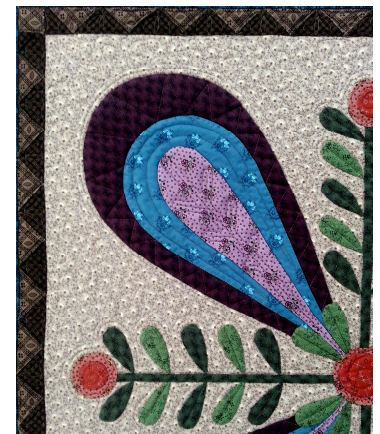
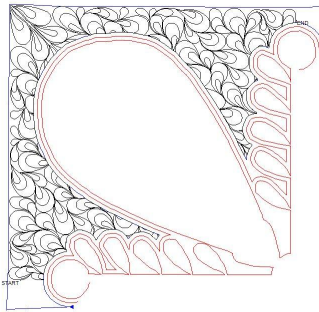
To create the needed Boundary, use P2P Line to mark the seam lines of the background. Snap this line to the final echo, Combine Group, and Convert P2B. Be sure that the Boundary line does not cut through the area where you intend to place the Fill pattern.

The Fill Pattern

Select the Fill pattern and size it to fit the full background space. Use Nodes / Divide to divide the block into 4 quadrants. Toggle 3 as sewn, to be used later.



Quilting



Place 1/4 of the Fill pattern over the corresponding quadrant of the quilt. Use Fill Inside to crop the pattern to fit within the background space. Quilt.

Remove all boundaries and repeat the same steps for each quadrant, as needed, to complete the background.